

Customized



RoHS

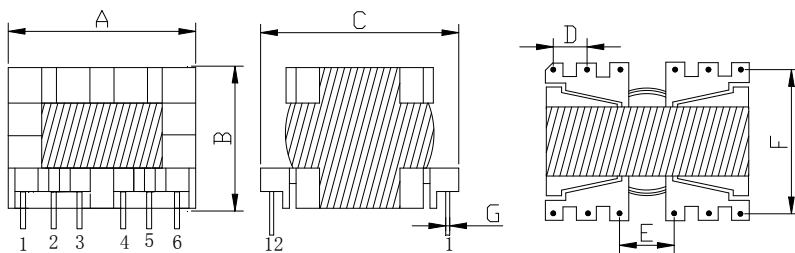
产品概要 Outline

- 铁氧体铁心金属化使其具有优异的抗冲击性能和无损伤耐久性。
Metallization on ferrite core results in excellent shock resistance and damage-free durability.
- 闭路磁路设计减少了漏磁和电磁干扰(EMI)。
Closed magnetic circuit design reduces leakage flux and Electro Magnetic Interference (EMI).
- 铁基金属材料芯提供了很大的饱和电流。
Fe base metal material core provides large saturation current.
- 自动化生产确保了产品的高质量和一致性。
Automatic production ensures high quality and consistency.
- 100%无铅, 符合RoHS要求
100% Lead(Pb)-Free and RoHS compliant

品名规格 Part Numbering System

PQ	2620	-	1mH
1	2		3
品名	尺寸		电感值
SERIES	DIMENSIONS		INDUCTANCE

外观尺寸 Appearance and Dimensions (Unit:mm)



TYPE	A	B	C	D	E	F	G
PQ2620	29.5Max	21.5Max	30.5Max	3.8±0.3	7.5±0.3	25.4±0.5	0.6±0.1
PQ2625	29.5Max	26.5Max	30.5Max	3.8±0.3	7.5±0.3	25.5±0.5	0.7±0.1
PQ3225	34.0Max	28.0Max	35.0Max	5.0±0.3	7.5±0.3	30.0±0.5	0.8±0.1
PQ3230	34.0Max	34.0Max	35.0Max	5.0±0.3	7.5±0.3	30.0±0.5	0.8±0.1
PQ3535	37.0Max	40.0Max	40.0Max	5.0±0.3	10.0±0.3	35.0±0.5	1.0±0.1
PQ4040	42.0Max	45.0Max	43.0Max	5.0±0.3	15.0±0.3	38.0±0.5	1.0±0.1